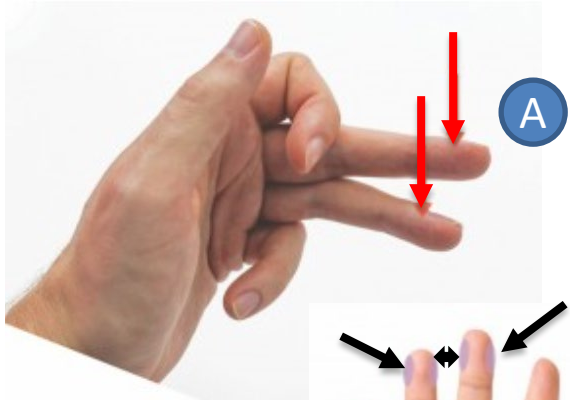


## 1 INFORM AND REASSURE THE PATIENT

- Explain the procedure
- Reassure the patient
- Answer questions limited to the technical aspects of sampling only
- Prepare puncture supplies prior to sample collection
- Wash your hands thoroughly and put on gloves
- Handle all biological samples in accordance with your institution's policies and procedures

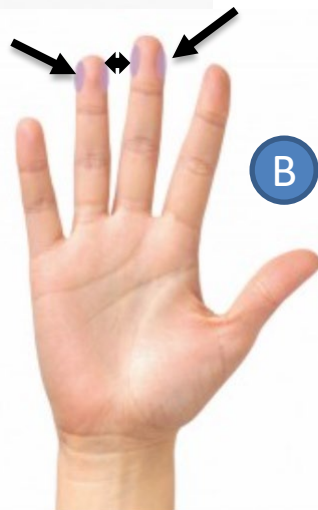
## 2 SELECT THE PUNCTURE POINT



The preferred fingers to use are the middle and ring fingers.

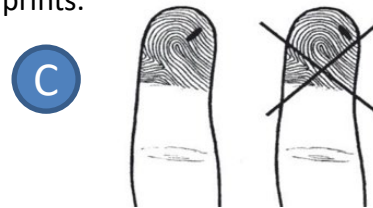
The index finger should be avoided as it can be more sensitive and calloused.

Ensure that the patient does not wear a ring on their finger, as this can obstruct blood flow.



The puncture should be performed on the central part of the finger and slightly on the side of the palmar surface of the 3rd phalange.

The puncture should be perpendicular to the grooves of the fingerprints.



Do not prick the sides near the nail or on the fingertip, as the distance between the skin surface and the bone in that location is only half as great as on the palmar surface.

## 3 PREPARE THE PUNCTURE SITE FOR THE CAPILLARY SAMPLING

- Warm the puncture site - Before performing the procedure, a light massage of the puncture site can promote blood circulation and blood flow.
- Blood flow can be promoted by letting the arm hang loosely by the side.
- Sanitize the puncture site with an alcohol swab.
- Wait for the puncture site to dry completely in the open air.

## 4 SAMPLE COLLECTION: CAPILLARY BLOOD

1



Wear gloves, prepare test strip

2



Apply alcohol to the entry site and allow to air dry

3



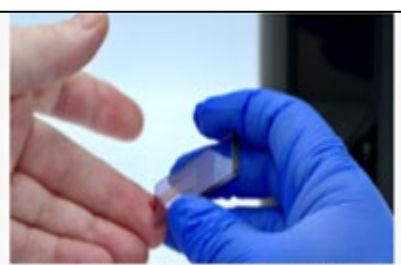
Puncture the skin with one quick continuous stroke



Wipe off the first two drops of blood



Apply gentle pressure until a sufficient drop of blood appears. Avoid squeezing the finger too tightly, this may introduce interstitial fluids and can influence results



Place the test strip at about 45° angle towards the blood drop / Wait for aspiration by capillarity

4

5

6

**Important considerations:**

- Avoid squeezing the patient's finger too tightly, as this can dilute the specimen with tissue fluids and influence the result values.
- Each test strip is for single use only.
- Dispose of used equipment in a bio-medical waste container.

\*Please refer to the CSAN® Pronto® Operator's Manual for more information on the proper use of the device.